



Dear Parents and Carers,

Another busy and happy week at Lower Heath!

End of Year 6 SATs family picnic – Friday, 17th May

Last year, we had a family picnic to mark the King's Coronation. We also used this as a celebratory end to the year 6 SATs week. As the event was enjoyed by everyone, we are repeating it this year (but without the crowns)! EVERYONE is welcome – not just year 6 parents. Come along from **2:45pm** with picnic mats, chairs and food and drink! The year 6s have worked incredibly hard in the run up to their SATs so we will enjoy sharing this special time with them.

Beetle Drive - Wednesday, 22nd May (see poster below)

Thank you to those of you who have already booked in for our Beetle Drive. This is going to be a fun evening so please do come along. You will need to book in as we are providing food and a bar so we need to make sure you are all catered for! Thank you to our group of fantastic parents who are leading on this event! If you would like to get involved, ring the office and they will put you in touch with Sarah Allwood our Boss Beetle!

Lower Heath Open Afternoon for everyone! Friday, 7th June 1:30-3pm (see poster below)

In the past, we have organised sessions for parents to come in and see lessons going on. This is a great way for you to see first hand the subjects your children learn, and they love having their parents in with them so they can show off their knowledge and skills! This year, we are tying this in with our Open Afternoon where we invite prospective new parents to see our lovely school. We will have a variety of lessons going on through the afternoon including a musical performance, Forest School and P.E. amongst other things. We are even hoping that Mr Holt-Williams will be showcasing our KS2 Maypole dancers! Now that's something you don't get in many schools! Please put the date in your diary drop in for all or part of the afternoon. We'll get a booking system sorted nearer the time.

Spiritual garden

We are officially opening our Spiritual Garden on Friday, 10th May. All classes will share an outdoor worship with Reverend Armstrong to talk about what spirituality means and how we use this beautiful space effectively. You will be able to see the garden in all its splendour when you come to the family picnic. Huge thanks go to everyone who has played their part in helping with this project. In particular, the Allwood and Breeze families, who have devoted more time than any to make this garden happen. Lower Heath Staff and children are very grateful.



Helen Reynolds
Headteacher

Please can someone order some sunshine!

CELEBRATION

Happy Birthday to:

Archie S who has a birthday this week.



AWARD WINNERS 

Congratulations to this week's **Award winners**, who are:

	Star Reader	Maths Rockstar	Headteacher Award
Robin Class	Frankie	Alfie	Archie
Skylark Class	George	Grace	Eliza P
Kingfisher Class	Ella-May	Hattie	Jacob L
Owl Class	Bella	Lily T	Mia G

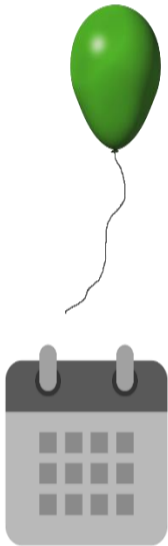
UPCOMING EVENTS

- **Bank Holiday:** School closed
- **Year 6 SATs Week:** 13th-16th May
- **Family picnic:** 17th May
- **Beetle Drive:** 22nd May
- **Marches Big Sing:** 23rd May
- **Break up for Half Term:** 24th May
- **Back to School:** 3rd June
- **Year 4 Multiplication Tables Check:** 3rd-14th June
- **Open Afternoon for existing and prospective families:** 7th June
- **Owl Class Trip – Darwin Science Week:** 10th June
- **Parent Coffee Drop in:** 5th June
- **Owl residential to York:** 12th – 14th June
- **New EYFS Parent Drop in:** 19th June
- **Owl Class Bikeability:** 19th/20th June
- **New Parents Family Lunch and Afternoon Play:** 26th June
- **Summer Fair:** 28th June
- **Transition Days:** 1st and 2nd July
- **Sports Day:** 8th July
- **Reports to parents:** 12th July
- **Friday Night Dinner (Y6 parents):** 19th July
- **Year 6 trip:** 22nd July
- **Leavers Assembly:** 23rd July
- **Break up:** 24th July



Lower Heath Facebook page

Please like and share our posts



LOWER HEATH CE PRIMARY SCHOOL AND NURSERY

OPEN AFTERNOON

COME AND SEE LOWER HEATH IN ACTION

COME AND MEET OUR WONDERFUL TEAM AND SEE:

CLASS DEMONSTRATIONS • PE AND FOREST SCHOOL LESSONS • MUSICAL PERFORMANCES • PLUS MUCH MORE

REFRESHMENTS PROVIDED

FRIDAY 7TH JUNE 1:30 – 3PM

Lower Heath, Prees, Whitchurch, SY13 2BT
 For More Information contact us on 01948840524 / admin@low.mmat.co.uk

Beetle Drive

- £20 per family (up to 5 members)
- £10 Individual Adult
- £5 Individual Child

*Tickets to include food and light refreshments. Paid bar available

Lower Heath School
 Wednesday 22nd May
 From 5:30pm - 7pm
 Come & go as you please

Fun for young and old!

Raising money to update our outdoor equipment with an outdoor gym!

Please book in with the office: 01948 840524
 Lower Heath CE Primary School, Lower Heath, Prees, SY13 2BT

WORSHIP



This half term's value is LOVE.

Through the term, we will explore bible stories and real life events which lead us to understand how love is shown by us and others and how we can always be sure that God loves us.

