



Dear Parents and Carers,

We would like to extend our congratulations and welcome to Mrs Christine Richards who has been appointed as our new parent governor. Christine will be known to many of you and is a huge part of our Lower Heath family, having Grace and Izzy at school with us currently. Thank you to Christine for putting yourself forward to work on our Governing Board to support with our school improvement work.

Year 6 SATs and FAMILY PICNIC: Friday, 17th May from 2:45pm

Next week, we are all routing for our year 6 pupils who sit their Standard Assessment Tests. They have all worked super hard, supported brilliantly by Mr Holt-Williams and we all wish them the very best of luck. All year 6 children are invited to attend Foxy's Den for breakfast FREE OF CHARGE next week to have a chat with their friends make sure they have a nutritious start to the day. We always say that the SATs only measure a small part of our children. We recognise and celebrate all of our children's talents. Just do your best year 6s – you'll smash it!

We hope to see as many of you as possible for our family picnic next week (everyone welcome) as a celebration for the end of SATs for this year.

Lower Heath Healthy Bake Off – Friday 7th June

As part of the 'One Voice' Project lead by our Wellbeing Ambassadors this year, their next idea was a Bake Off challenge with a healthy twist. Linked with our Children's Health Project four pillars of health, cooking is a healthy habit and with a healthy twist, also supports healthy eating. Children and adults are invited to bake something with a healthy twist. You could add hidden vegetables into a muffin or make a healthy swap out/in. There will be a children and adults (both staff and parents) competition. Miss Lewis and Mrs Thomas are raring to go! Bakes can be brought into school on the 7th June. Bakes will be judged and then sold off at the end of the school day so come along to grab some tasty weekend treats!

Beetle Drive

Don't forget to sign up for our parent Beetle Drive event – see poster below. It will be a great night for all the family to enjoy! Thank you for donations today – you can bring in more until the Beetle Drive day!

Helen Reynolds
Headteacher



CELEBRATION

Happy Birthday to:

Archie P, Charlie and Eliza P who have a birthday this week.

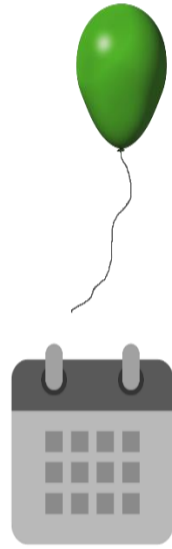
UPCOMING EVENTS

- Year 6 SATs Week: 13th-16th May
- Family picnic: 17th May
- Beetle Drive: 22nd May
- Marches Big Sing: 23rd May
- Break up for Half Term: 24th May
- Back to School: 3rd June
- Healthy Bake Off: 7th June
- Year 4 Multiplication Tables Check: 3rd-14th June
- Open Afternoon for existing and prospective families: 7th June
- Owl Class Trip – Darwin Science Week: 10th June
- Parent Coffee Drop in: 5th June
- Owl residential to York: 12th – 14th June
- New EYFS Parent Drop in: 19th June
- Owl Class Bikeability: 19th/20th June
- New Parents Family Lunch and Afternoon Play: 26th June
- Summer Fair: 28th June
- Transition Days: 1st and 2nd July
- Sports Day: 8th July
- Reports to parents: 12th July
- Friday Night Dinner (Y6 parents): 19th July
- Year 6 trip: 22nd July
- Leavers Assembly: 23rd July
- Whole School sleepover: 23rd July
- Break up: 24th July

AWARD WINNERS 

Congratulations to this week's **Award winners**, who are:

	Star Reader	Maths Rockstar	Headteacher Award
Robin Class	Antony	Harper	Millie
Skylark Class	Emily	Finley	Pippa
Kingfisher Class	Eliza W	Theo	Olly S
Owl Class	Mia S	Jennifer	Jacob




Beetle Drive

- £20 per family (up to 5 members)
- £10 Individual Adult
- £5 Individual Child

*Tickets to include food and light refreshments. Paid bar available.

Lower Heath School
 Wednesday 22nd May
 From 5:30pm - 7pm
 Come & go as you please

Fun for young and old!

Raising money to update our outdoor equipment with an outdoor gym!

Please book in with the office: 01948 840524
 Lower Heath CE Primary School,
 Lower Heath,
 Prees,
 SY13 2BT



LOWER HEATH CE PRIMARY SCHOOL AND NURSERY

OPEN AFTERNOON

COME AND SEE LOWER HEATH IN ACTION

COME AND MEET OUR WONDERFUL TEAM AND SEE:

CLASS DEMONSTRATIONS • PE AND FOREST SCHOOL LESSONS • MUSICAL PERFORMANCES • PLUS MUCH MORE

REFRESHMENTS PROVIDED

FRIDAY 7TH JUNE 1:30 - 3PM

Lower Heath, Prees, Whitchurch, SY13 2BT
 For More Information contact us on 01948840524 / admin@low.mmat.co.uk



The Great Lower Heath HEALTHY Bake off

Friday 7th June
 Cakes will be sold after school

Child & Adult entries

Prizes for best adult and children's entries

What healthy twists can you make?

WORSHIP



This half term's value is LOVE. Through the term, we will explore bible stories and real-life events which lead us to understand how love is shown by us and others and how we can always be sure that God loves us.

