



Dear Parents and Carers,

Gosh that half term flew by! Next half term will be just as busy with our year 6 children preparing for their move to secondary school, Owl Class heading off to York for their residential and all other children taking part in their own school trips to support with their learning. Lots of fun yet to come!

Owl class shared the details of their latest courageous advocacy project in worship this week – **Great Lower Heath Healthy Bake Off**. You might want to do some research over the half term and get some practicing in! We are looking for entries from CHILDREN AND ADULTS. Cakes, biscuits, flap jacks or brownies – but there has to be a healthy twist. Entries to the competition can be brought in to school on **Friday, 7th June**. Prizes for best child and adult entry. Everything to be sold at the end of the day!

Lower Heath Open Afternoon – Friday 7th June

Reminder about our Open Afternoon. This is for both prospective and existing parents. It's a great opportunity to see what your child gets up to on a normal day at school. We'll start the afternoon in the hall at **1:30pm** with a few musical performances then our year 6 children will show you around the different lessons that are going on. So we have a rough idea of numbers attending on the day, please could you Dojo your child's class teacher or call the office to let them know you will be coming.

Facebook and Easy Fundraising

If you aren't already connected to us on Facebook, it would be great if you could – see link below. If you 'heart' and share our posts, we can spread all of the great things we do at Lower Heath. I've also put our Easy fundraising link below. This is a fabulous way to earn FREE money for school. Thank you for your support.

Mental Health Bingo

Don't forget to complete the activities on your mental health bingo over half term. Complete 10 activities or more to be entered into a draw to win a wellbeing hamper. Return your entries after half term.

Skipping Workshop

As part of our Children's Health Project 'Healthy Movement' pillar, we are holding a whole school skipping day on 3rd June. No need to do anything – normal school uniform is fine. Look out for the letter today.

Helen Reynolds
Headteacher



Have a restful half term break. We look forward to seeing you back in school on Monday 3rd June.

CELEBRATION

Happy Birthday to:

Hattie, Harper T and Mrs Jenkins who have a birthday this week.



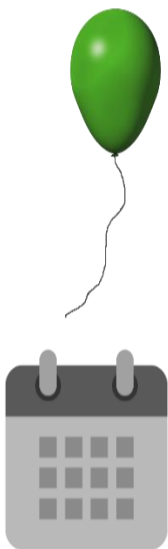
AWARD WINNERS 

Congratulations to this week's **Award winners**, who are:

	Star Reader	Maths Rockstar	Headteacher Award
Robin Class	Mary	Aubrey	Archie S
Skylark Class	Rocco	Harper G	Reggie C
Kingfisher Class	Noah	Arthur	Isobel
Owl Class	Lily S	Philippa	Charlie W

UPCOMING EVENTS

- **Break up for Half Term:** 24th May
- **Back to School:** 3rd June
- **Open Afternoon for existing and prospective families:** 7th June
- **Healthy Bake Off:** 7th June
- **Year 4 Multiplication Tables Check:** 3rd-14th June
- **Owl Class Trip – Darwin Science Week:** 10th June
- **Parent Coffee Drop in:** 5th June
- **Owl residential to York:** 12th – 14th June
- **New EYFS Parent Drop in:** 19th June
- **Owl Class Bikeability:** 19th/20th June
- **New Parents Family Lunch and Afternoon Play:** 26th June
- **Summer Fair:** 28th June
- **Transition Days:** 1st and 2nd July
- **Sports Day:** 8th July
- **Futures Focus Day:** 10th July
- **Reports to parents:** 12th July
- **Friday Night Dinner (Y6 parents):** 19th July
- **Year 6 trip:** 22nd July
- **Leavers Assembly:** 23rd July
- **Whole School sleepover:** 23rd July
- **Break up:** 24th July



LOWER HEATH CE PRIMARY SCHOOL AND NURSERY

OPEN AFTERNOON

COME AND SEE LOWER HEATH IN ACTION

COME AND MEET OUR WONDERFUL TEAM AND SEE:
 CLASS DEMONSTRATIONS • PE AND FOREST SCHOOL LESSONS • MUSICAL PERFORMANCES • PLUS MUCH MORE
 REFRESHMENTS PROVIDED

FRIDAY 7TH JUNE 1:30 – 3PM

Lower Heath, Prees, Whitchurch, SY13 2BT
 For More Information contact us on 01948840524 / admin@low.mmat.co.uk



Easyfundraising QR code. Please sign up to get donations for our school



Lower Heath Facebook page
 Please like and share our posts

WORSHIP



This half term's value is LOVE. Through the term, we will explore bible stories and real-life events which lead us to understand how love is shown by us and others and how we can always be sure that God loves us.

