



Dear Parents and Carers,

We've finally seen some sunshine this week and it's been a joy to see children playing together on the school field. Fingers crossed that it isn't a fleeting visit.

Beetle Drive - Wednesday, 22nd May (see poster below)

Reminder about our Beetle Drive. Please book in with the office for food and fun! Next **Friday (10th May)** we are having a **non-uniform day** in return for prizes for the Beetle Drive and Raffle. We would be very grateful for any bottles, gifts, sweets or chocolate etc you may be able to donate.

Lower Heath Open Afternoon for everyone! Friday, 7th June 1:30-3pm (see poster below)

Put this date in your diaries! Open afternoon for existing and prospective parents. If you know of anyone who is looking for a primary school place for their child, invite them along to see Lower Heath in action.

Parent Portal

Thank you to those of you who have registered with the Arbor Parent Portal. Mrs Dakin has sent out letters to some families who have not done this yet. Please can I encourage you to do this, as from September, we are aiming to use Arbor for many more things such as booking parents' evenings. We may also be moving away from School Money for all payments. If you are unsure how to do this, please do get in touch and we can support.

Online Safety

In our PSHE lessons this term, we have been discussing online safety. It is worth once again sharing with parents a link to the NSPCC 'Keeping Children Safe Online', in particular, this page on 'parental controls'. <https://www.nspcc.org.uk/keeping-children-safe/online-safety/parental-controls/> The online world gives us access to a huge amount of information but the scale of information available also means there is content that is inappropriate for children. By allowing children universal access to seemingly innocent apps such as WhatsApp to chat with friends, children can be vulnerable. Please take a moment to look at the page, talk to your children and review with them the apps and games they are accessing, referring to age ratings. Ensuring all devices, apps, games and home Wifi have adequate parental controls will go some way to keeping your children safe online. I am working with our IT department to organise a drop in session for parents to provide support for this important issue.



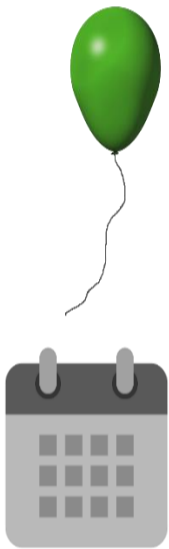
Helen Reynolds
Headteacher

Remember it's Bank Holiday 6th May so school is closed. See you back at school on the 7th.

CELEBRATION

Happy Birthday to:

- **Bank Holiday: 6th May** School closed
- **Non-uniform Day for Beetle Drive Donations: 10th June**
- **Spiritual Garden opening: 10th May**
- **Year 6 SATs Week: 13th-16th May**
- **Family picnic: 17th May**
- **Beetle Drive: 22nd May**
- **Marches Big Sing: 23rd May**
- **Break up for Half Term: 24th May**
- **Back to School: 3rd June**
- **Year 4 Multiplication Tables Check: 3rd-14th June**
- **Parent Coffee Drop in: 5th June**
- **Open Afternoon for existing and prospective families: 7th June**
- **Healthy Bake Off: 7th June**
- **Owl Class Trip – Darwin Science Week: 10th June**
- **Owl residential to York: 12th – 14th June**
- **New EYFS Parent Drop in: 19th June**
- **Owl Class Bikeability: 19th/20th June**
- **New Parents Family Lunch and Afternoon Play: 26th June**
- **Summer Fair: 28th June**
- **Transition Days: 1st and 2nd July**
- **Sports Day: 8th July**
- **Reports to parents: 12th July**
- **Friday Night Dinner (Y6 parents): 19th July**
- **Year 6 trip: 22nd July**
- **Leavers Assembly: 23rd July**
- **Whole School Sleepover: 23rd July**
- **Break up: 24th July**



AWARD WINNERS 

Congratulations to this week's **Award winners**, who are:

	Star Reader	Maths Rockstar	Headteacher Award
Robin Class	Isla-Rae	Mary	Jack
Skylark Class	Harper	Evelyn	Robyn and Evie
Kingfisher Class	Ralph	Eliza K	Alfie T
Owl Class	Ava S	Ava L	Eve

LOWER HEATH CE PRIMARY SCHOOL AND NURSERY
OPEN AFTERNOON

COME AND SEE LOWER HEATH IN ACTION
 COME AND MEET OUR WONDERFUL TEAM AND SEE:
 CLASS DEMONSTRATIONS • PE AND FOREST SCHOOL LESSONS • MUSICAL PERFORMANCES • PLUS MUCH MORE
 REFRESHMENTS PROVIDED

FRIDAY 7TH JUNE 1:30 - 3PM

Lower Heath, Prees, Whitchurch, SY13 2BT
 For More information contact us on 01948840524 / admin@low.mmat.co.uk

Beetle Drive

- £20 per family (up to 5 members)
- £10 Individual Adult
- £5 Individual Child

*Tickets to include food and light refreshments. Paid bar available

Lower Heath School
 Wednesday 22nd May
 From 5:30pm - 7pm
 Come & go as you please

Fun for young and old!

Raising money to update our outdoor equipment with an outdoor gym!

Please book in with the office: 01948 840524
 Lower Heath CE Primary School, Lower Heath, Prees SY13 2BT



Lower Heath Facebook page
 Please like and share our posts

WORSHIP



This half term's value is LOVE. Through the term, we will explore bible stories and real life events which lead us to understand how love is shown by us and others and how we can always be sure that God loves us.

