



**Dear Parents and Carers,**

I have had the privilege this week of spending three days with our lovely Owl Class children on their residential experience in York. The trip was seamless due to the military-precision organisation of Mr Holt Williams, ably supported by Miss Lewis and Miss Renny, Jessie's Mum and Clare Tudor, Marches Trust External Visits Coordinator. Children were taken through the history of rail travel, enjoyed a river cruise, ambled through a Victorian street, tasted and created their own chocolate product and walked the historic walls. There was a lot of walking – children were tired but they supported each other, no matter how tired they became. Residential are always a time where we see a very different side to our children and they never fail to impress us. Thank you to everyone who played a part in organising this special trip. I would imagine our children will remember it for many years to come.

**Summer Fair – non-uniform day for donations**

Our last non-uniform day for donations towards our Beetle Drive was, unfortunately, not well supported. We have, therefore, assumed it is difficult to source items to donate. As a result, we are changing this approach to make it simpler! We are holding a non-uniform day on **Wednesday, 19<sup>th</sup> June** in return for a **£1 donation** per child. We will have a collection bucket on the gate for you to make your donation. With the money collected, Mrs Thomas and Jenkins will source the necessary prizes for the summer fair. I hope this makes it easier for you and look forward to welcoming children in non-uniform if they are able to make their donation. If you would prefer to donate an appropriate summer fair item, you can of course still do this.

You will have received your raffle tickets to sell to friends and family. If you are unable to sell any, please return them to enable someone else to sell them.

At the moment, all of our fundraising is to go towards improving our outdoor play equipment, in particular, installing an outdoor gym.

It should be a fun event!

*Helen Reynolds*  
**Headteacher**



**CELEBRATION**

**Happy Birthday to:**

Lauren and Enid who have had birthdays this week.



**AWARD WINNERS** 

Congratulations to this week's **Award winners**, who are:

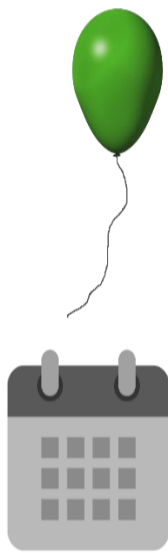
|                  | <b>Star Reader</b>      | <b>Maths Rockstar</b> | <b>Headteacher Award</b> |
|------------------|-------------------------|-----------------------|--------------------------|
| Robin Class      | Frankie                 | Jack                  | Aubrey                   |
| Skylark Class    | Rocco                   | Robyn                 | Phonics Superstars       |
| Kingfisher Class | Elias                   | Elliot                | Nieve                    |
| Owl Class        | At York for Residential |                       |                          |

**UPCOMING EVENTS**

- **World Music Day Celebration:** 19<sup>th</sup> June
- **New EYFS Parent Drop in:** 19<sup>th</sup> June
- **Owl Class Bikeability:** 19<sup>th</sup>/20<sup>th</sup> June
- **Kingfisher trip to Attingham:** 20<sup>th</sup> June
- **New Parents Family Lunch and Afternoon Play:** 26<sup>th</sup> June
- **Summer Fair:** 28<sup>th</sup> June
- **Transition Days:** 1<sup>st</sup> and 2<sup>nd</sup> July
- **Robin and Skylark trip to Cosford:** 3<sup>rd</sup> July
- **Kingfisher Class Assembly:** 3<sup>rd</sup> July
- **Sports Days:** 8<sup>th</sup> July
- **Skylark Class Assembly:** 9<sup>th</sup> July
- **Futures Focus Day:** 10<sup>th</sup> July
- **Reports to parents:** 12<sup>th</sup> July
- **Robin Class Assembly:** 16<sup>th</sup> July
- **Owl Class Assembly:** 17<sup>th</sup> July
- **Friday Night Dinner (Y6 parents):** 19<sup>th</sup> July
- **Year 6 trip:** 22<sup>nd</sup> July
- **Leavers Assembly:** 23<sup>rd</sup> July
- **Whole School sleepover:** 23<sup>rd</sup> July
- **Break up:** 24<sup>th</sup> July



**Lower Heath Facebook page**  
 Please like and share our posts



**End of Day**  
 We have a lot of cars lining up on the road again before the gates open at 3:15pm.  
 PLEASE DO NOT GET TO SCHOOL BEFORE 3:20pm AS YOUR CHILDREN WILL NOT BE READY TO COME TO YOU BEFORE THIS TIME.  
 Please consider everyone's safety by observing this simple rule.

**Holiday reminder**

As a school, we are proactive in discouraging parents/carers from taking children out of school for holidays during term time. We consider this action inappropriate and harmful to the education of your child. If you are considering holiday bookings, please refer to our attendance policy using this link: [Attendance Policy](#) Applications for time off school must be made at least two weeks in advance and are unlikely to be authorised. Please see in particular, this paragraph:



**Holiday**

The Headteacher can only approve holiday in term time in exceptional circumstances, which are very rare. Should you take an unauthorised holiday, the unauthorised absence will be reported the Education Welfare Officer and you may be fined.

**WORSHIP**



This half term's value is FELLOWSHIP. Through the term, we will explore bible stories and real-life events which lead us to understand how fellowship is shown by us and others and how this helps us to let our light shine together.

