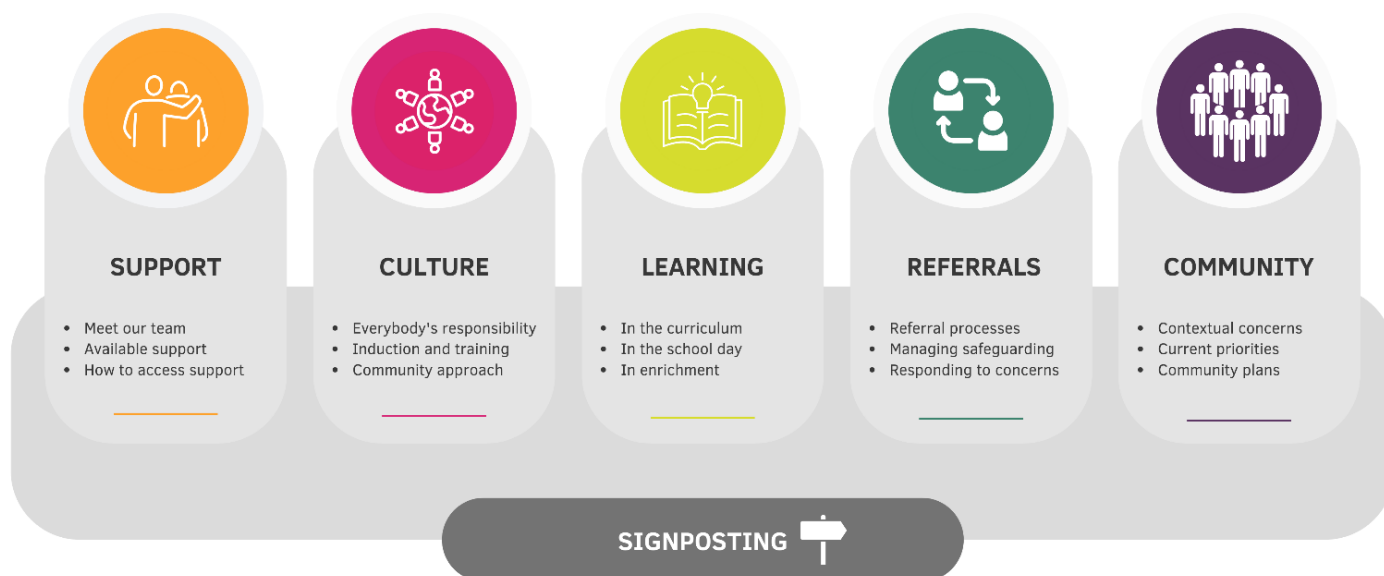


# Safeguarding at Lower Heath CE Primary School

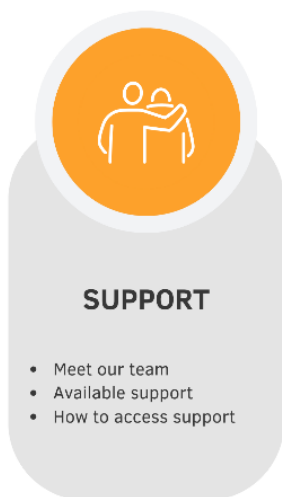


**Safeguarding is the action that is taken to promote the welfare of children and protect them from significant harm.**

Safeguarding means:


- Protecting children from abuse and maltreatment.
- Preventing harm to children's health or development.
- Ensuring children grow up with the provision of safe and effective care
- Taking action to enable all children and young people to have the best outcomes.

Lower Heath takes safeguarding very seriously; the safety and welfare of our students is paramount. This document sits alongside our MMAT Safeguarding and Child Protection Policy and Procedures and outlines our school specific safeguarding processes and how we support our children and families.



## Meet Our Team

### Lower Heath CE Primary Safeguarding Team

	<u>Ms</u> Helen Reynolds Designated Safeguarding Lead Headteacher SENDCo
	<u>Mr</u> Jonathan Holt-Williams Deputy DSL Year 5/6 teacher
	<u>Mrs</u> Helen Hipkins Deputy DSL Designated Lead for Looked After Children EYFS teacher
	<u>Mrs</u> Gemma Kirk Pastoral Lead KS1 Teaching Assistant

- Designating Safeguarding Lead (DSL): Helen Reynolds.
- Deputy Designated Safeguarding Leads (DDSL): Helen Hipkins, Jonathan Holt-Williams
- Pastoral Lead: Gemma Kirk
- Safeguarding Link Governor: Sarah Allwood
- Should you have any questions or concerns regarding the safety of any children or families within the Lower Heath community, please visit the 'About Us – Safeguarding' section on our website: [Lower Heath Safeguarding](#)

For most children, verbal praise and recognition of positive behaviour will be enough to support them in being ready to access learning. However, at times, children will face challenges and need additional support to regulate their emotions to manage the demands of the school day, their home life and social interaction.

## Designated Safeguarding Leads

At school we have a number of experienced Designated Safeguarding Leads and Deputy DSLs who act as the first point of contact for any safeguarding or child protection incidents or concerns.

## Pastoral Support

Our Pastoral lead supports pupils to be able to successfully access the curriculum, learning and social activities, enabling children regardless of their ability, gender, race or social standing to reach their full potential.

## Teachers and Teaching Assistants

As part of our SEND and Safeguarding offer, our teaching assistants work directly with our pupils who have additional needs, whether these be learning, behavioural, social or emotional. These skilled staff may work 1:1 or with groups.

### How to access support?

#### Parents:

- If you have a concern, please speak to a member of the DSL team or telephone the school to arrange a meeting on 01948 840524
- If a child is at immediate risk, please call the police on 999.
- If you have a concern about a child, please contact FPOC on 0345 6789 044.

#### Pupils:

- Pupils can speak to any member of staff about a concern. Some children might have a key worker who is assigned to check in regularly with them.
- Pupils know who the safeguarding team are and reminded regularly that if they have a concern or worry, they can speak to anyone.
- Worry boxes: Every class has a worry box which teachers check daily. Children can write concerns and worries and post them. Teachers can then support the child with their concern/worry.
- Zones of Regulation (ZoR): we use ZoR to identify and describe how we are feeling.

#### Staff:

- Staff should follow the MAT safeguarding policy. If you see or hear something of concern, you must report it.
- Staff should record the concern on CPOMS and if a child is off imminent risk should inform a DSL immediately
- All staff working with pupils at Lower Heath CofE Primary School have a Enhanced DBS and are logged on the Single Central Record.
- DSL will then respond to the concerns.
- Supervision - staff have opportunities to discuss incidents with DSLs.



- Safeguarding pupils is the responsibility of all school staff. Staff will maintain an attitude of 'it could happen here' and always act in the best interests of the pupil when they are concerned about the child's welfare. If staff have any concerns about a pupil's welfare, they will act on them immediately. Staff will follow the reporting procedure set out in our safeguarding policies and procedures
- All staff and governors have annual updates relating to the up-to-date Keeping Children Safe in Education document
- DSLs receive full up-dates to their training every two years
- Weekly reminders relating to safeguarding issues pertinent to Lower Heath are shared in the weekly bulletin
- All new staff have Safeguarding training as part of their induction process
- Our Pastoral Lead has expertise in supporting families through the Early Help process

### Lower Heath Safeguarding Culture

Safeguarding is heart of everything we do. Our Lower Heath Values of Love, respect, faith, fellowship and thankfulness actively teach the need to safeguard ourselves and those around us. Our staff are approachable and friendly providing a safe space for our children, families and the wider community.

Safeguarding is a key aspect of the MAT's Learning for Life Framework and WAVE guidance. This has several different levels. The Safeguarding assurance audits our safeguarding systems and structures ensuring we are offering the best care and keeping everyone safe. Vulnerable Students reviews take place half termly and these offer support, guidance and challenge in child centred discussions. We complete Local Authority Safeguarding Audits regularly and adapt our practice and procedures accordingly. The school has regular Inclusion meetings and Pupil Progress meetings which internally use the Learning for Life and Wave guidance to discuss next steps.

Supervision is developing at Lower Heath; everyone has a safe space to talk, if needed. The school buy in to SAS insurance which offers a well-being package which all staff have access to.

The school has been accredited with the Safer School since 2016. The school works tirelessly to ensure that pupils and families feel that the school is a safe space.

All employees are responsible for safeguarding children and young people, promoting their welfare, and ensuring they grow up in safe and effective care. By prioritising safeguarding, Lower Heath creates a culture of care, trust, and protection, where all members of the school community feel secure and supported.

## **Recruitment, Induction and training**

- When recruiting new staff, the recruitment process is underpinned by the Safer Recruitment requirements and training.
- All staff have accredited training (Safeguarding, Prevent, Online Safety, GDPR).
- We regularly attend current training to develop expertise of staff.
- Safeguarding is a key aspect of our induction package for new staff, volunteers and visitors.
- All staff completed an annual assessment based on the updates from KCSIE.
- A range of scenarios are provided regularly on the weekly briefing for staff addressing recent issues.
- Updates from the local authority are shared.

## **Community Approach**

We work closely with local schools, the police team, and other community partners to ensure the safety of our students both inside and outside of school. Our collaboration with other agencies ensures that any concerns or suspicions are addressed promptly and confidentially.

## **Parental Involvement**

We share information with parents to help them understand our safeguarding systems and support their children effectively. Regular communication, awareness, and resources are provided through emails and bulletins, encouraging open dialogue without judgment.



- Our school values of Love, Respect, Faith, Fellowship and Thankfulness instil in all children the need to look after each other
- These messages are regular subjects for daily worship discussions
- Staff use consistent vocabulary, reinforcing the values and treating everyone with respect
- The PSHE curriculum has safety as the golden thread running through it
- Should an issue arise such as bullying or rough play, additional activities are set-up such as whole school worship to reinforce key messages
- Equality, Diversity, Inclusion, Belonging (EDIB) is a golden thread running through our curriculum which reinforces fundamental British Values
- All children know who they can talk to, should they have any concerns
- All classes have 'worry boxes' or 'worry monsters' which children can access freely if they don't feel able to talk to someone. These are checked regularly and followed up with adult intervention
- Pupil voice is gained to establish current thinking relating to safeguarding e.g. do children feel safe; if they don't feel safe, what should they do

## How does our curriculum support safeguarding?

Our PSHE and RSE curriculum, delivered through the Kapow scheme, covers themes such as Family and Relationships, Health and Wellbeing, Safety, Citizenship, and Economic Wellbeing. This curriculum is faith-sensitive, inclusive, and inspiring, helping children make responsible decisions and understand their role in a diverse society. Weekly Primary Picture News lessons further enhance their understanding of the world and respect for different beliefs. Our Computing curriculum regularly teaches online safety. The first lesson of every half term is dedicated to an aspect of online safety, so it is interwoven throughout the curriculum using an interleaving approach. Throughout other subjects in the curriculum, we also explicitly make cross-curricular links to Safeguarding, for example, in science learning about which foods are edible and what to do if we do not know what it is.

Our Assembly calendar is carefully designed to interweave our Lower Heath Values, the British Values and Safeguarding topics. These topics include regular reminders regarding who to talk to in school and coloured lanyards. It also includes safety topics such as water, railway and sun safety.

## How does the school day support safeguarding?

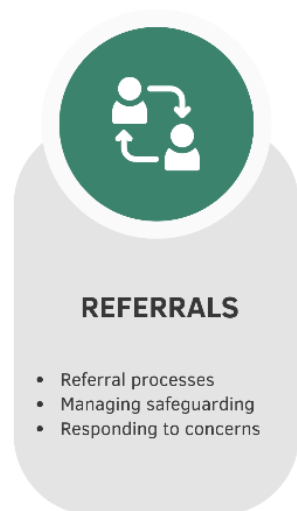
Rhythm of the day is designed to support with safeguarding. Presence on the gate by members of the senior leadership team facilitates open dialogue with families.

Attendance is key to our safeguarding. We have a detailed absence procedure to ensure that a clear, robust system and structure is in place that identify patterns and anomalies to mitigate potential risk factors. Posters and visual reminders are located around school to remind pupils and staff about the layers of support and advice available. There is also a clear flow chart of the procedures for staff to follow.

## How does our enrichment support safeguarding?

We encourage students to contribute positively to school life and the wider community through roles like school council members, collective worship leaders, and sports leaders. Our Courageous Advocacy

program informs students about global issues and promotes local community improvement. We engage in various charitable activities, supporting organizations like Macmillan Cancer Support and local food banks. Lower Heath enriches the curriculum in various ways to develop and teach children about how to keep themselves and others safe. Throughout the year, we have planned trips to external events and visitors who come to school. For example, Reception, KS1 and UKS2 Year 6 Bikeability opportunity, whole school workshops have included water safety and workshops from the Dog's Trust. All of these experiences teach and build on pupils' prior knowledge and learning to support their pathway to adulthood.



- To see the flowchart of how referrals are made, please visit the 'About Us – Safeguarding' section on our website: [Lower Heath Safeguarding](#)
- CPOMS is used to record any incident that may be considered a safeguarding concern
- All staff have received training on how and when to use CPOMS
- Weekly reports are used to analyse any patterns in behaviours
- Behaviour Policy appendices ensure a consistent approach is taken by all staff
- Newsletters for NSPCC and Shropshire Safeguarding Community Partnership shared with all staff

## Managing Safeguarding

At Lower Heath CE Primary School, safeguarding is a top priority. The Designated Safeguarding Lead (DSL) oversees all safeguarding concerns and ensures they are followed up appropriately. These concerns are logged in a confidential reporting system, CPOMS (Child Protection Online Management System). All staff can report any concerns, and key staff are able to see these records, which they monitor and action as appropriate.

We work closely with other agencies to ensure that all children and families receive the support they need and that children grow up in a safe and supportive environment. This support may include:

- **Early Help:** Referrals to a school nurse, support with finances, referrals to the foodbank, or family meetings in school.
- **Targeted Early Help:** Families working with the Strengthening Families Team for additional support.
- **Higher Level Support:** In some cases, families may need a higher level of support and may work with a social worker.

Staff have access to Safeguarding Supervision sessions to ensure they are supported in their roles.

## Responding to Concerns

All staff and volunteers at Lower Heath CE Primary School are expected to report and record any safeguarding concerns and take action in response. The next steps depend on the concern and level of risk, which we assess using the Shropshire Safeguarding Community Partnership Threshold Document.

When speaking to someone who has a concern:

- We ensure the person speaking up feels they are being listened to and supported.
- We do not promise to keep information confidential but will only share it with people who need and have the right to know.
- We inform the Designated Safeguarding Lead (DSL) or Deputy DSL about any concerns so they can decide on the next steps.
- We write a clear record in CPOMS of what we have been told, seen, or heard.
- The DSL or Deputy DSL makes a decision on the next steps.

## Referral Process

When referrals are made, a member of our safeguarding team will review them and decide on the most appropriate course of action. This might involve speaking to families or referring to external agencies such as Compass or the Police. We always keep our children and young people's best interests at the centre of all our safeguarding procedures.

We will communicate the outcomes of referrals where this is appropriate within information-sharing rules.

## Support for Students

Support is available for any child or young person during school hours from all members of staff. Safeguarding students is everybody's responsibility. If a child or young person has any concerns or worries about themselves or about any other member of the school community, they can raise these with any adult in school. Staff will listen carefully to children and young people when they are making disclosures or passing on information and will refer this to a member of the safeguarding team.

## Staff Training and Responsibilities

All our staff are trained in safeguarding Level 1 as a minimum, Prevent trained, and receive regular updates relating to Keeping Children Safe in Education (KCSIE) as well as local concerns and national legislation. Staff are encouraged to refer anything that may be a concern. Our safeguarding team will triage concerns and provide support and advice on referrals.

If families have any concerns, they can contact any member of our safeguarding team or pastoral team. As a school, we also make other referrals outside of FPOC to other agencies such as:

- School Nurse
- BeeU (CAMHS)
- Mental Health Support Team
- Speech and Language
- Occupational Therapy



### What are Lower Heath community concerns?

Within school, our preventative curriculum is designed to address national concerns of increased anti-social online behaviour.

This is done in conjunction with families to empower our children and young people to stay safe. Furthermore, these experiences are designed to provide equity for our children so they have the opportunities to learn like children from economically affluent backgrounds.

### What are our Lower Heath priorities?

Ensuring our curriculum supports our pupils to be good citizens ready for their next stage.

### What is our community plan?

Working with communities for a better tomorrow

## Contextual Concerns

At Lower Heath CE Primary School, we recognize that safeguarding extends beyond the school gates and into the wider community. Our pupils may face various contextual challenges, including:

- **Rural Isolation:** Many of our pupils come from rural areas, which can lead to feelings of isolation and limited access to services.
- **Online Safety:** With increasing use of digital devices, ensuring online safety is a growing concern.
- **Family Dynamics:** Diverse family structures and dynamics can impact children's well-being and safety.
- **Local Crime:** Awareness of local crime trends, including anti-social behaviour and substance misuse, is crucial for proactive safeguarding.

## Current Priorities

Our current safeguarding priorities focus on addressing these contextual concerns through targeted actions:

- **Enhanced Online Safety Education:** Implementing comprehensive online safety programs for pupils and parents.
- **Community Engagement:** Strengthening ties with local services and organisations to support families and children.
- **Mental Health Support:** Providing access to mental health resources and support within the school.
- **Training and Awareness:** Regular training for staff on emerging safeguarding issues and effective intervention strategies.

## Community Plans

To foster a safe and supportive community environment, we have developed the following plans:

- **Partnerships with Local Services:** Collaborating with local health, social care and law enforcement agencies to provide holistic support to our pupils and their families.
- **Parent Workshops:** Hosting workshops on topics such as online safety, mental health and positive parenting.
- **Community Events:** Organising events that bring together pupils, families and community members to build a strong, supportive network.
- **Student Voice:** Encouraging pupils to participate in school councils and community projects to empower them and give them a voice in their safety and well-being.

For more detailed information, please refer to our [Safeguarding Policy](#) and [Community Plan](#).